

An aerial photograph of a city, likely St. Louis, showing a large bridge spanning a river. The city skyline is visible in the background, and the river flows through the foreground. The image is slightly faded to allow the text to be prominent.

DRIVING THE CIVIL ENGINEERING INDUSTRY FORWARD WITH GIS

GI Council Meeting – October 2, 2020
MaKyla Tipken, Kyndra Spencer,
& Craig Moody

Poe & Associates, Inc.

- Professional Engineering Services since 1967
 - ▣ Oklahoma City & Tulsa
 - ▣ 70 Employees Company-Wide
- Services
 - ▣ Transportation
 - ▣ Public Utilities
 - ▣ Program Management
 - ▣ Construction Management
 - ▣ Survey
 - ▣ GIS & Mapping



Poe & Associates, Inc.
Consulting Engineers

Poe & Associates, Inc.

- Craig Moody
 - ▣ 31 Years of Experience
 - Transportation Planning
 - Roadway Design
 - Public Involvement
 - ▣ GI Council (2013-2016)
- Makyla Tipken, GISP, CFM
 - ▣ 18 Years of Experience
 - Transportation
 - GIS
- Kyndra Spencer
 - ▣ FAA Part 107 Certified Drone Pilot
 - ▣ GIS



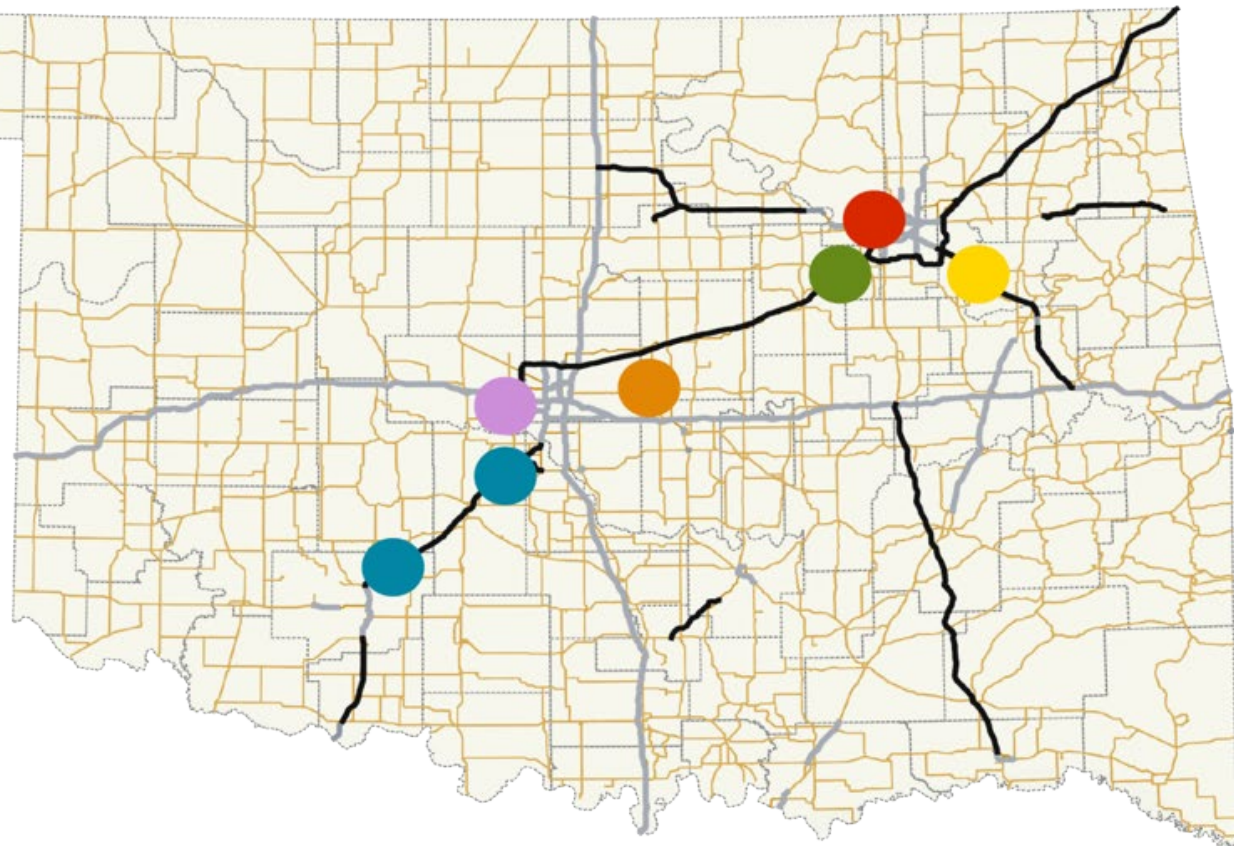
Driving Forward – Program Overview

- Announced October 29, 2015
by Governor Fallin
- Six Corridors
 - ▣ Improve Safety
 - ▣ Modernize Roadways & Facilities
 - ▣ Relieve Congestion on ODOT's System
- Construction Began in 2016 & is Expected to be Completed by the End of 2021
- Program Manager: Poe & Associates, Inc.
 - ▣ Contracted with 23 sub-consultants to Deliver the Program



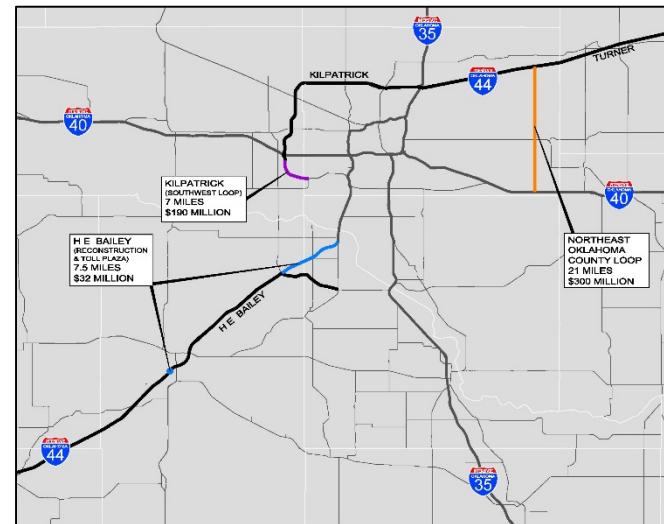
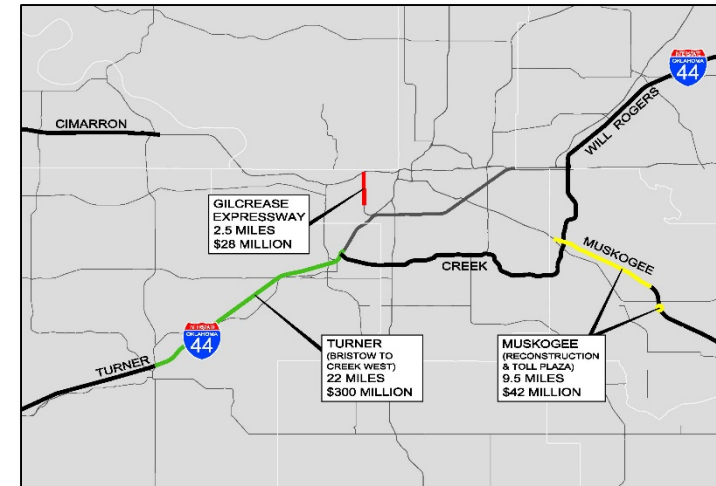
Driving Forward – Program Overview

- Toll Roads
- Gilcrease Expressway
- Northeast OK County Loop
- Muskogee Turnpike
- HE Bailey Turnpike
- Turner Turnpike
- Southwest Kilpatrick Extension



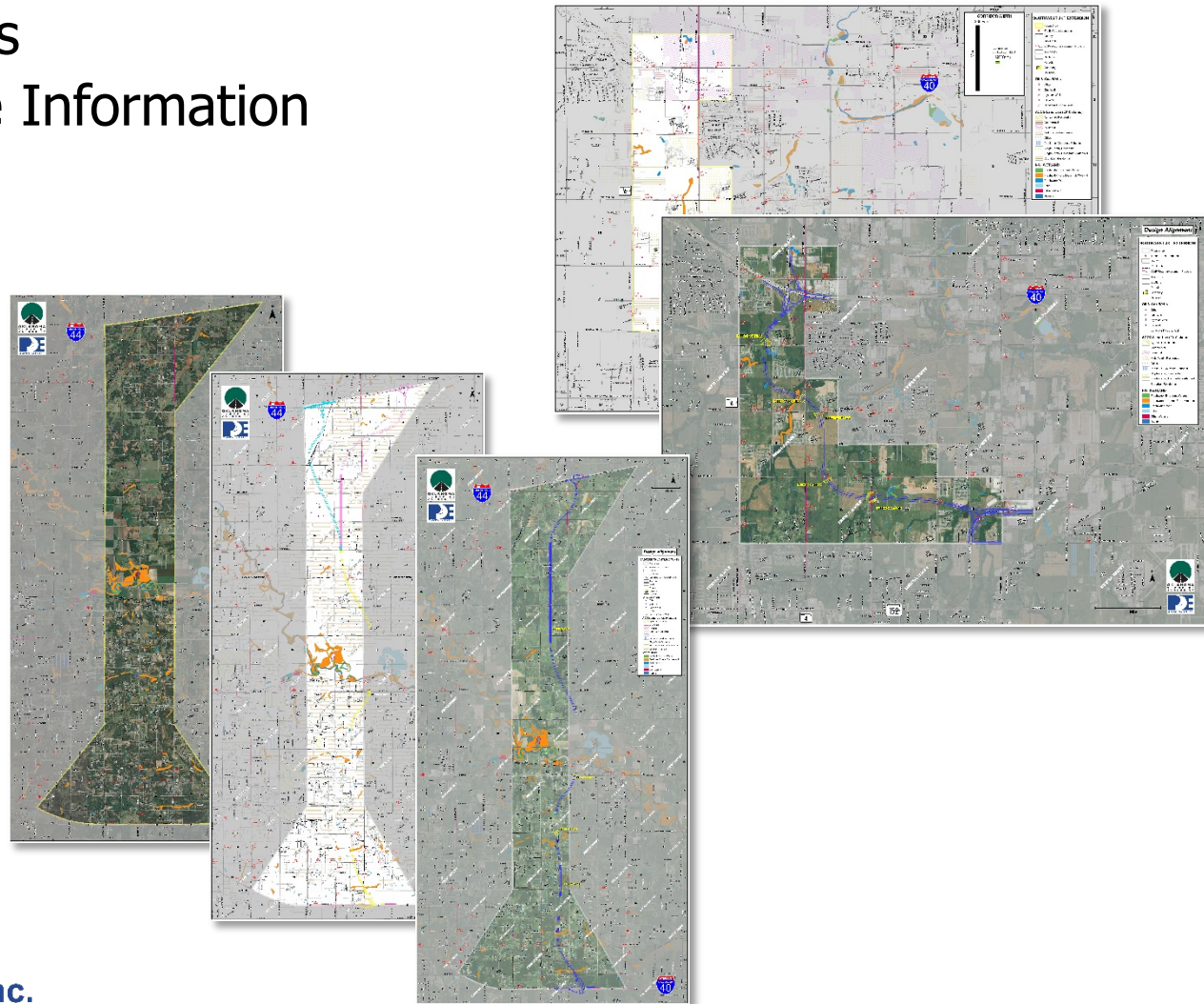
Driving Forward – GIS Background

- Four Corridor Focus
 - Kickapoo Turnpike
 - SW John Kilpatrick Turnpike
 - Turner Turnpike
 - Gilcrease Expressway
- Concurrent Timelines
 - Design
 - Right-of-Way Acquisition
 - Utility Relocations
 - Construction



Driving Forward – GIS Beginnings

- Design Meetings
- Reconnaissance Information
 - ▣ Sections
 - ▣ Counties
 - ▣ Cities
 - ▣ Highways
 - ▣ Roads
 - ▣ Railroads
 - ▣ Tribal Lands
 - ▣ Wetlands
 - ▣ Soils
 - ▣ AADT
 - ▣ Collision



Driving Forward – GIS Beginnings

- Public Meetings

- Exhibits
- Roll-outs
- KMZ files

- Stakeholder Coordination

- Local & Regional Entities
- Neighborhood Associations
- Key Businesses



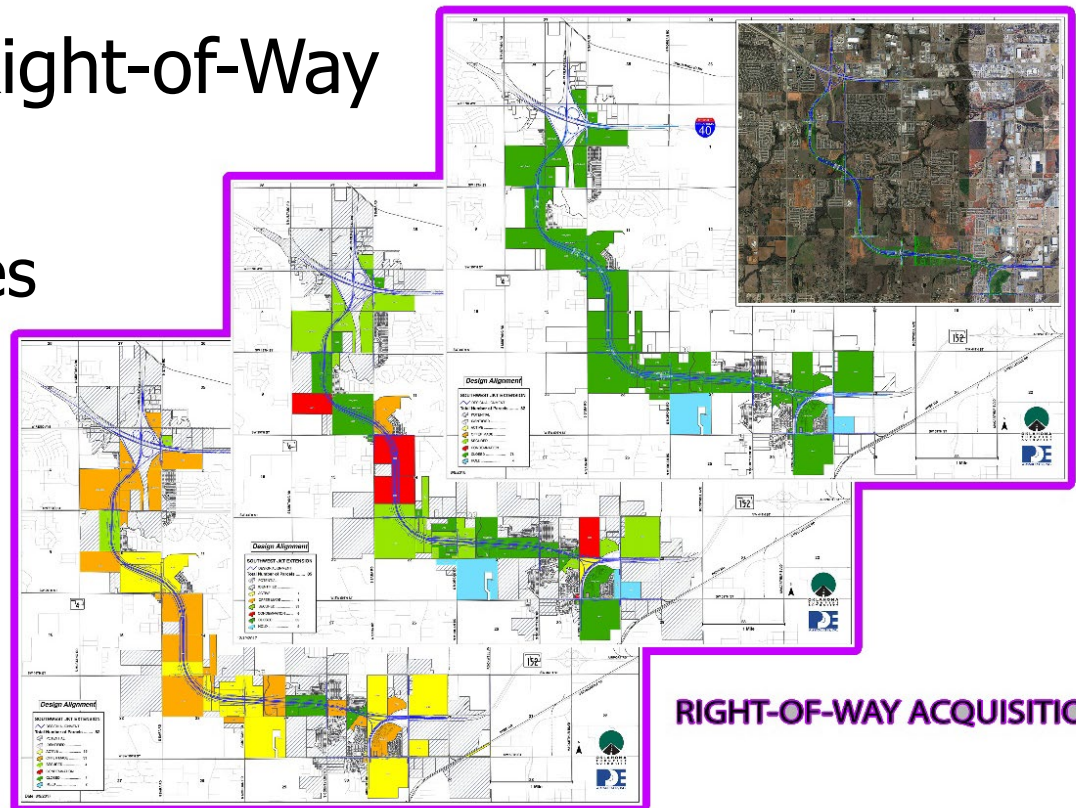
Right-of-Way Acquisition

- Spreadsheets
- Shapefiles
- Maps
- KMZ files



Right-of-Way Acquisition

- 4 Corridors
- 5 Acquisition Teams
- 1,000+ Parcels of Right-of-Way
- Bi-weekly Updates
 - ▣ Weekly Cost Updates



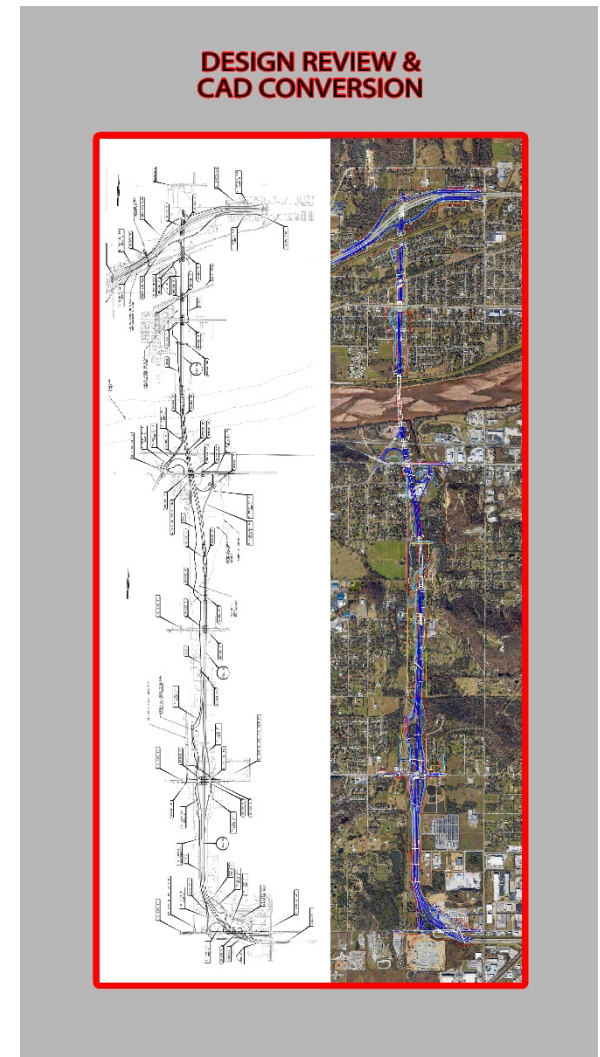
RIGHT-OF-WAY ACQUISITION



Poe & Associates, Inc.
Consulting Engineers

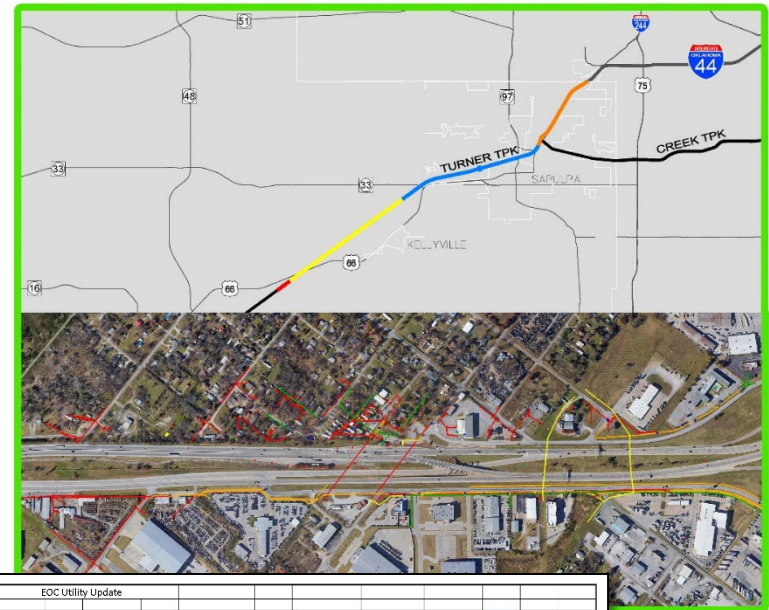
Design Conversion

- 12 Different Design Firms
 - ▣ Over 30 Design Projects
- All Using Unique CAD Standards
 - ▣ DGN & DWG formats
- 5 Coordinate Systems
 - ▣ State Plane North
 - ▣ Modified State Plane
- Converted All Projects to GIS
 - ▣ Uniform Layering/Organization
 - ▣ Standard Coordinate System
 - ▣ Design Submission Intervals



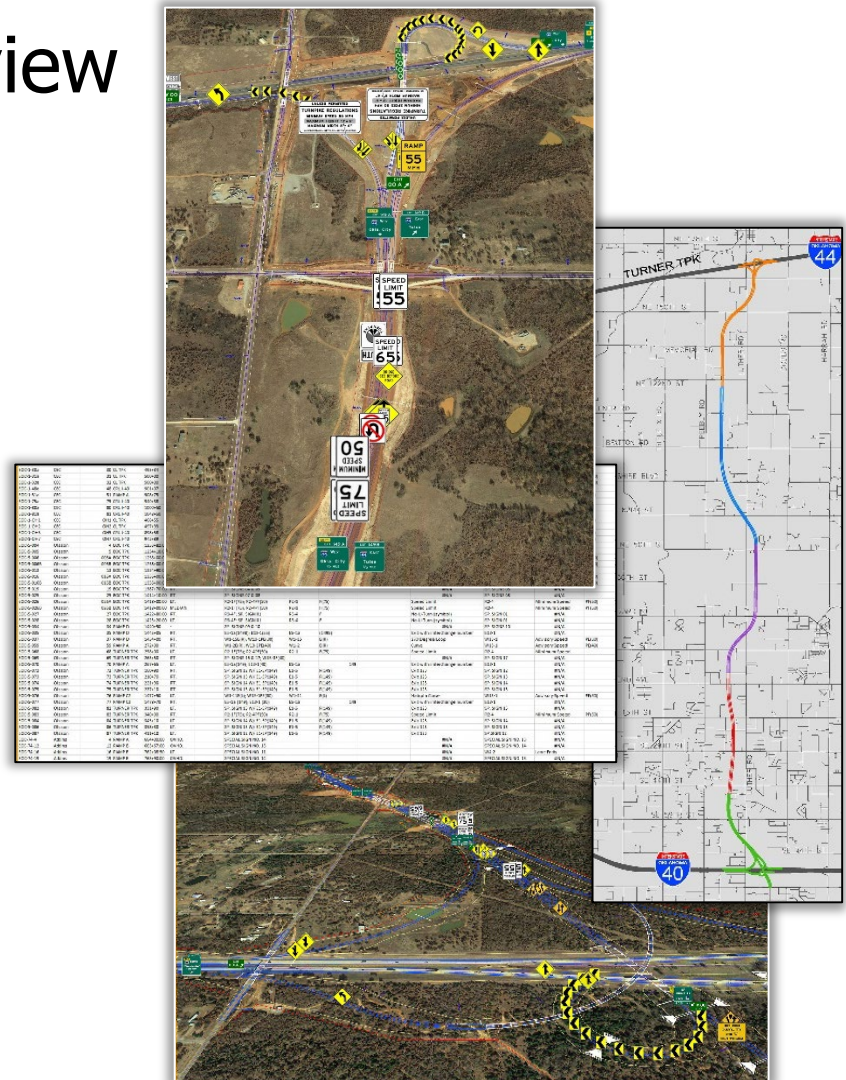
Utility Coordination

- One Utility Coordinator
 - ▣ Singular Point of Contact
 - ▣ Utilities per Corridor
- Coordinate Right-of-Entry
 - ▣ Acquisition
 - ▣ Relocations
 - ▣ Demo

[illegible]

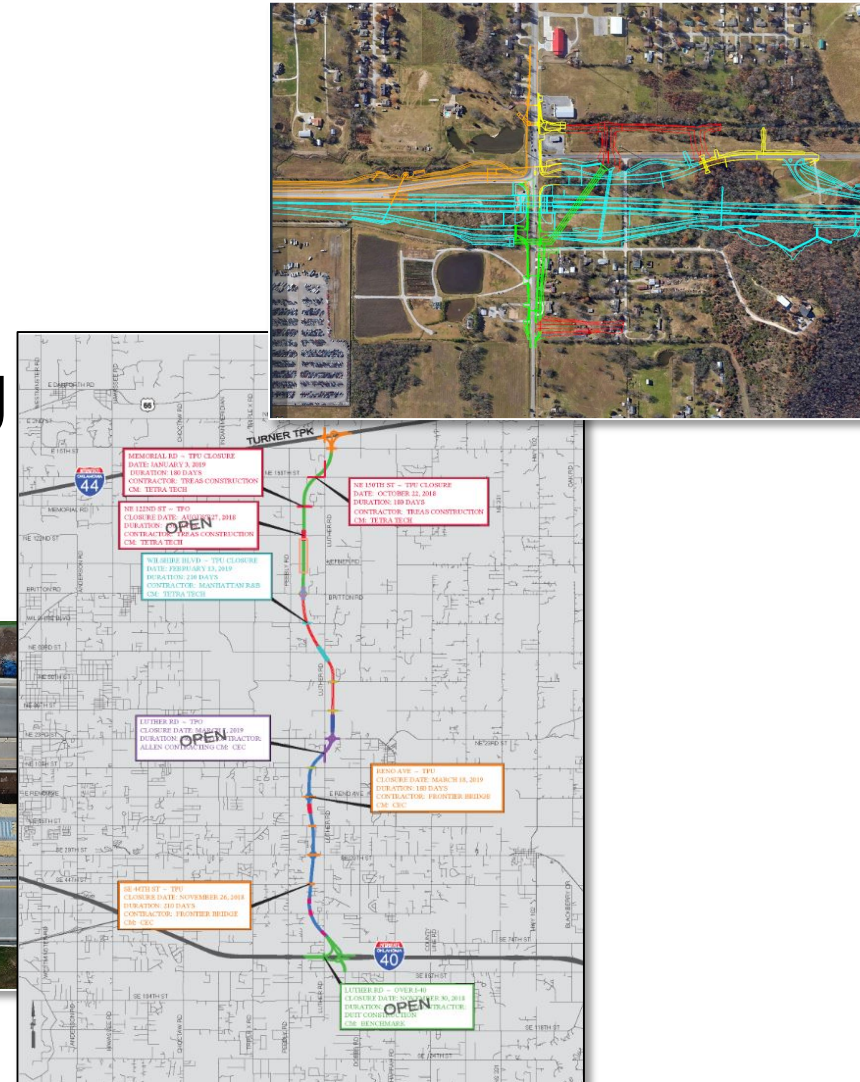
Asset Management

- Evolved from design review
 - ▣ 5 Roadway designers
 - ▣ 3 Interchange designs
 - ▣ Tolling
 - ▣ Turnpike entrance roads



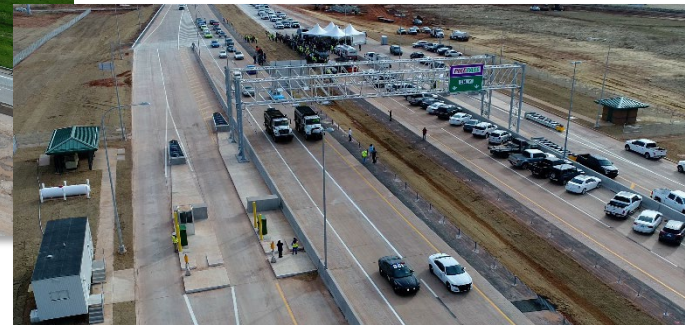
Construction Management

- ❑ Construction Phasing
- ❑ Utilizing kmz files
- ❑ Road closure updates
- ❑ Construction monitoring
 - Drones



Drones

- Began as construction monitoring
- Marketing
 - Public Meetings
 - Announcements
 - Opening Ceremonies



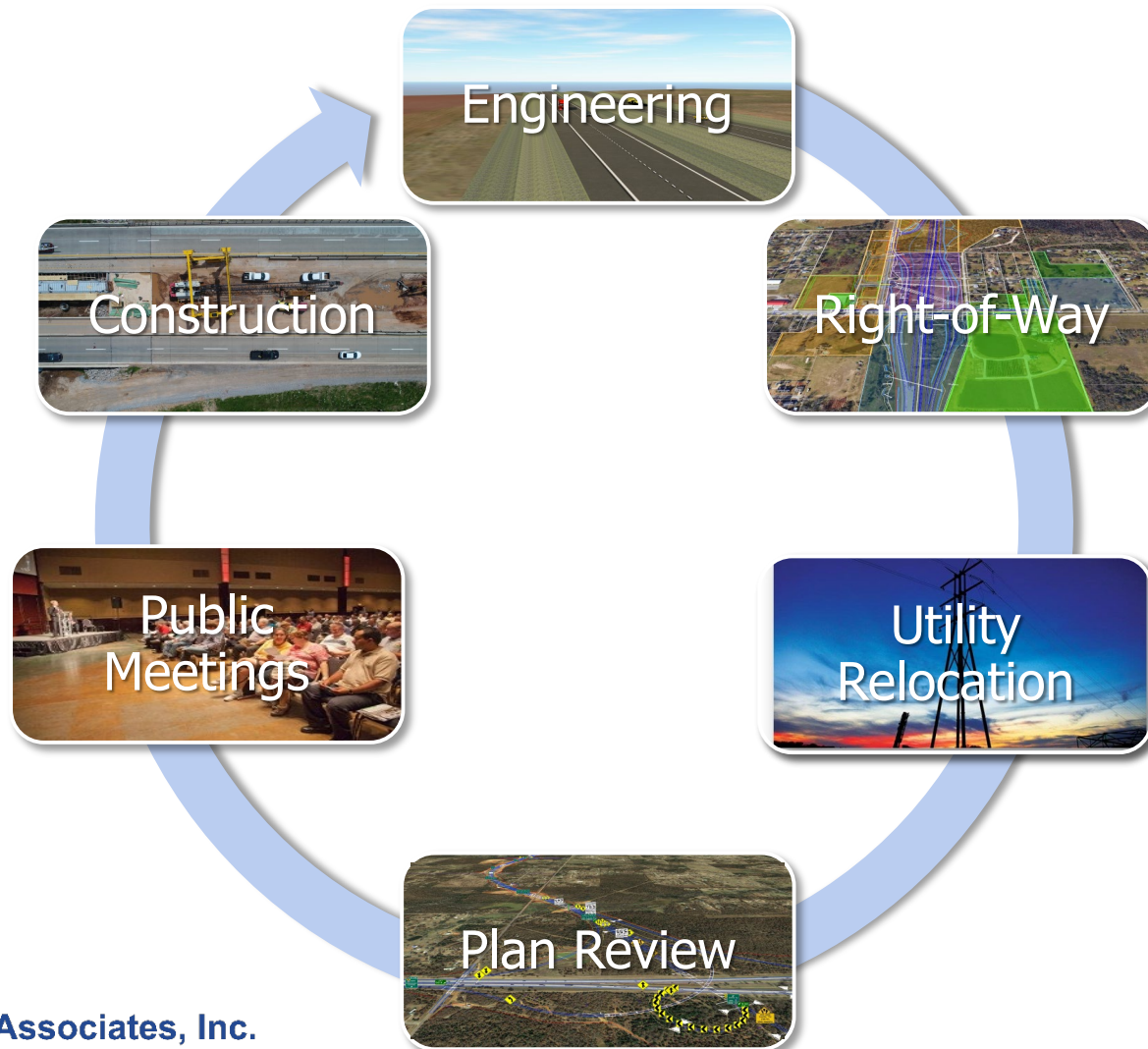
Public Involvement

- Present Program Information
 - ▣ Through Construction Completion
- Providing Support for OTA Presentations
- On-sight Interviews and Footage
- Direct Communication with Local Officials
- Public Facing Information
 - ▣ Websites
 - ▣ Meetings
 - ▣ Public Forums



Poe & Associates, Inc.
Consulting Engineers

Facilitate Planning and Design Decisions Using GIS



Poe & Associates, Inc.
Consulting Engineers

BIG DEAL!!!



- Beams – 245,219'
 - ▣ 8.5 times as tall as Mount Everest
- Excavation – 15.35 million CY
 - ▣ Fill AT&T Stadium 4 times
- Asphalt – 1.01 million tons
 - ▣ 40 times as heavy as the Statute of Liberty
- Concrete – 1.89 million CY
 - ▣ Fill 24.6 million beer kegs
- 340 Lane Miles
 - ▣ 6 times the length of the Panama Canal



QUESTIONS?

OTA's Driving Forward Website – drivingforwardok.com

Poe & Associates, Inc. – poeandassociates.com

Craig.Moody@poeandassociates.com

Makyla.Tipken@poeandassociates.com

Kyndra.Hanson@poeandassociates.com

