

OKMAPS Project: Update and Southern E-9 1 1 Project

Shellie Willoughby, GISP

OK Office of Geographic Information

Charles Brady III, GISP

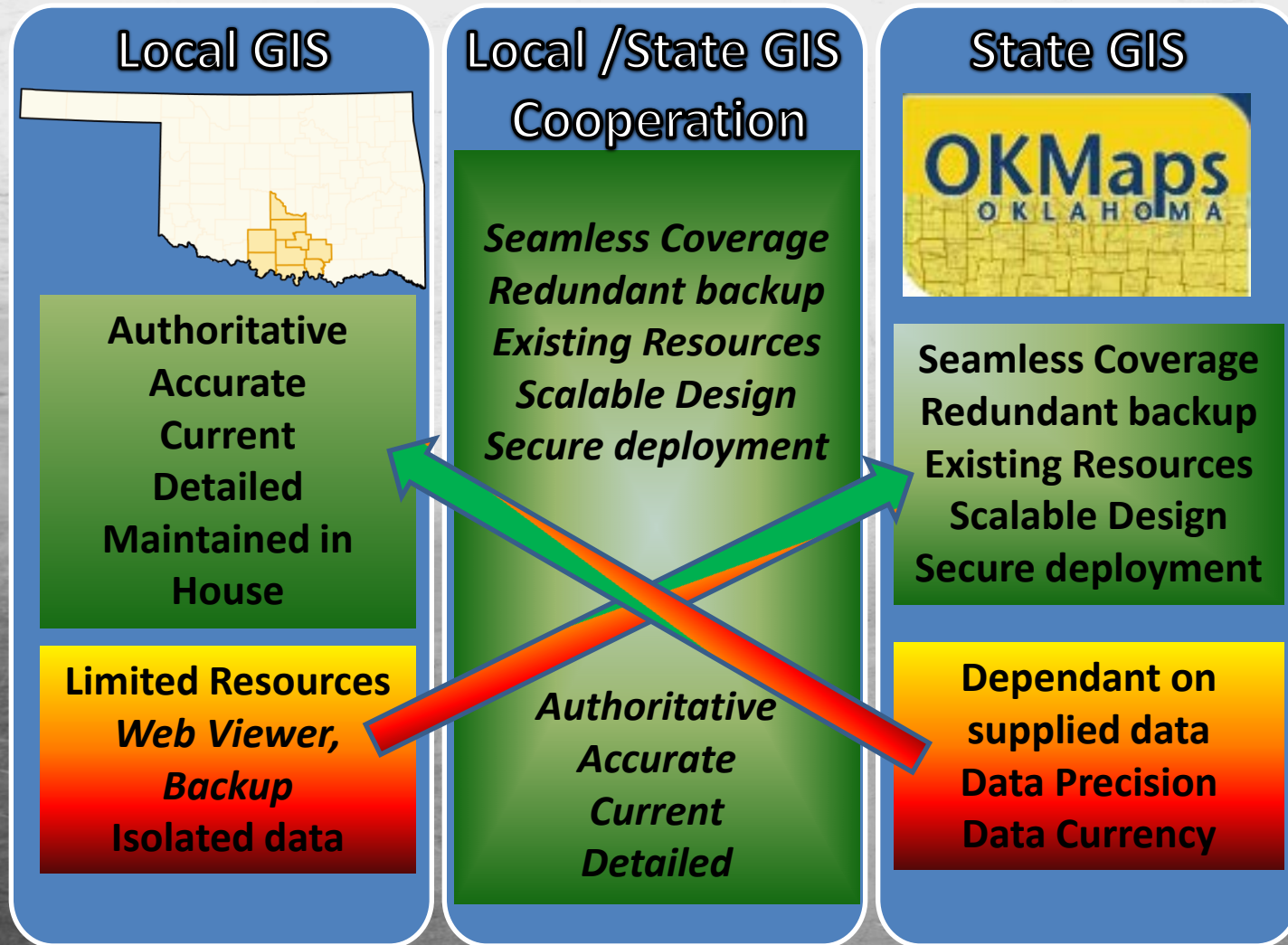
City of Ardmore

Addressing the Addressing Problem

- NO ACCEPTED PUBLISHED STANDARD IN THE STATE
- DIVERSE DEVELOPMENT
- DATA COMPATIBILITY ISSUES
- LIMITED USABILITY
- REDUNDANT EXPENSES
- DIFFICULTY IN DISPLAYING DATASETS ACROSS JURISDICTIONS
- INTERPRETATIONS OF TERMS DOESN'T TRANSLATE WELL BETWEEN USERS.
- DATA SECURITY / AVAILABILITY

Southern Oklahoma E-911 Project

REGIONAL SCAUG CONFERENCE IN ADDISON & AN IDEA...
SHARING STRENGTH & REMOVING LIMITS



Participating Entities

- Office of Geographic Information
- Marlow PD
- City of Marlow E911
- Stephens Co 911
- Garvin Co 911
- Marshall Co 911
- Murray Co 911
- Carter County E911
- Carter County E911 / GIS
- McClain County 911
- Love County E911
- Johnston County 911
- City of Ardmore GIS
- More Coming
 - More County 9-11
 - County Assessor Data



Online data

<http://ogi.state.ok.us/ogi/search.aspx>

The screenshot displays the OKMaps Oklahoma web application. At the top, a navigation bar includes a 'Login' link and the 'OKMaps OKLAHOMA' logo. Below this is a search bar with 'Search', 'Explore', and 'Locate' tabs. A vertical menu on the left lists data layers: Administrative Units, Education, Hydrology, Land Grids, Political, Transportation, Image Data, Structures, and LIDAR Elevation Data. The main map area shows a map of Oklahoma with county boundaries and names, major highways, and city locations. A Google Maps logo and 'Map data ©2013 - Terms of Use' are visible in the bottom left of the map area. The bottom of the interface features a blue bar with icons for various data formats (PDF, CSV, etc.) and links for Home, About, Help, Contact, and Site Map. On the right side of this bar are buttons for CSW 2.0.1, WMS 1.3.0, WFS 1.1.0, and WCS 1.0.